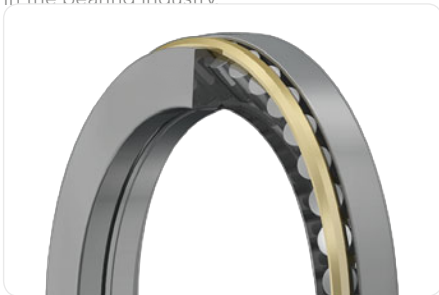




The UK Premium Class Bearing Manufacturer

BUT (Roulement, Kugellager, Bearing) is the UK bearing manufacturing organization which has been operating in the bearing industry for over 70 years, with a monthly production capacity exceeding 350 tons of machined steel. The experience gained over the years provides BUT with the expertise necessary for the development and manufacture of technological industrial bearings up to 1925 mm outer diameter. BUT offers reliable cost effective solutions, extreme operational flexibility, leading-edge service, huge stock availability, short delivery time and the high, consistent quality of a premium class bearing manufacturer. With a worldwide distribution network and exports to more than 50 countries, BUT is globally recognized as *"The Alternative Power"* in the bearing industry.



BUT Thrust Bearings

The thrust bearings (TBs) manufactured by BUT are designed to support high axial loads and, in some cases, even moderate radial loads. The manufacturing program includes single and double direction TBs with flat or spherical housing locating washers to meet any requirements in various industrial applications. Thanks to the improved internal geometry and the use of the most suitable raw materials, all BUT TBs attain the highest axial load ratings and the best reliability.

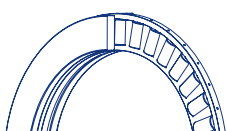
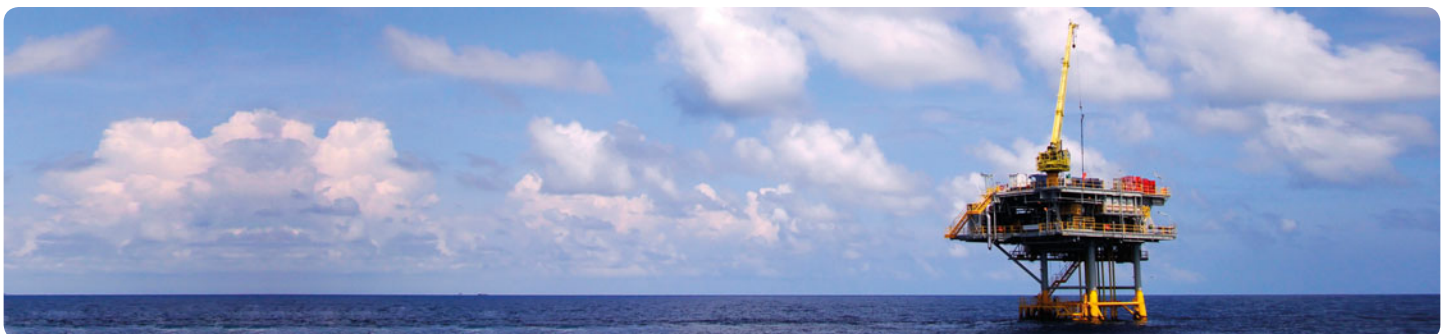
Depending on application requirements, BUT Bainite Hardening Treatment (HB) and High Temperature Dimensional Stabilization (S) can be applied on bearing rings and rolling elements. The bearing dimensional and running accuracy conforms to ISO/ABMA/GOST specifications.



Single Direction Thrust Bearings

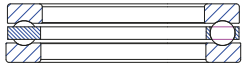
The broad portfolio of single direction thrust bearings (SDTBs) engineered and produced by BUT offers cost-effective solutions for the most demanding industries.

SDTBs can withstand only unidirectional axial loads, axially locating the shaft. Roller and raceway profiles are designed and manufactured to reduce stresses and minimize roller-edge effect. Depending on machine requirements and operating conditions, they can be customized to enhance application performance in a reliable and efficient way.



Main Designs

51M type



- Flat housing locating washer
- Separable design
- One-piece machined brass cage (M) guided on balls
- Supports unidirectional axial loads
- Available with sphered housing washer

HB

BAINITE HT

S

STABILIZATION

EM type



- Asymmetrical roller profile
- One-piece machined brass cage (M) guided on shaft washer (M)
- Reinforced and optimized execution (E)
- Supports unidirectional axial loads and angular misalignment

HB

BAINITE HT

S

STABILIZATION

O⁺

OPTIMIZED

R⁺

REINFORCED

EMevo type



- Asymmetrical roller profile
- One-piece EVO type machined brass cage guided on shaft (M)
- Reinforced and optimized execution (E)
- Supports unidirectional axial loads and angular misalignment

HB

BAINITE HT

S

STABILIZATION

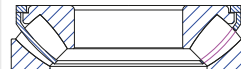
O⁺

OPTIMIZED

R⁺

REINFORCED

EJ type



- Asymmetrical roller profile
- High strength pressed steel cage (J) guided on shaft washer
- Reinforced and optimized execution (E)
- Supports unidirectional axial loads and angular misalignment

HB

BAINITE HT

S

STABILIZATION

O⁺

OPTIMIZED

R⁺

REINFORCED

81M type



- Flat housing locating washer
- Low cross section separable design
- Two-piece machined brass cage (M) guided on rollers
- Supports unidirectional axial loads
- Available with sphered housing washer

HB

BAINITE HT

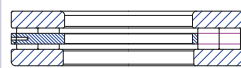
S

STABILIZATION

PROFILE

PROFILE

89M type



- Flat housing locating washer
- Two rows of rollers
- Two-piece machined brass cage (M) guided on rollers
- Low cross section separable design
- Supports unidirectional axial loads

HB

BAINITE HT

S

STABILIZATION

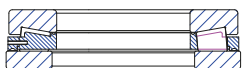
PROFILE

PROFILE

R⁺

REINFORCED

TKcr type



- Two-piece machined brass cage (M)
- Supports unidirectional axial loads
- Stiff arrangement

HB

BAINITE HT

S

STABILIZATION

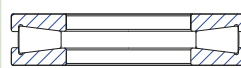
O⁺

OPTIMIZED

PROFILE

PROFILE

TKv type



- Full complement (cageless) design for increased carrying capacities
- Supports unidirectional axial loads
- Stiff arrangement
- Reduced limiting speed compared to caged design

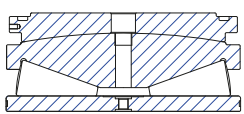
HB

BAINITE HT

S

STABILIZATION

TKSD type



- Full complement cageless design conceived for extremely high axial loads
- Special execution for screw-down mechanism
- Available with sphered shaft washer and pressure plate
- Reduced limiting speed

HB

BAINITE HT

S

STABILIZATION

R⁺

REINFORCED

